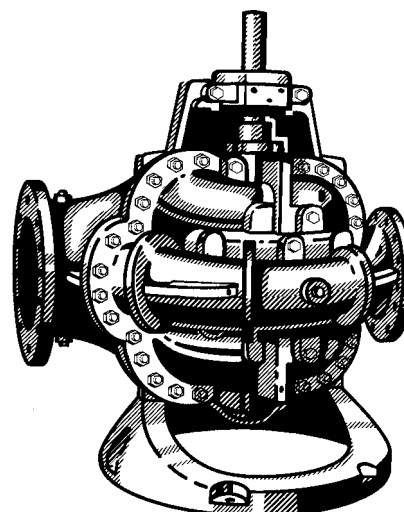
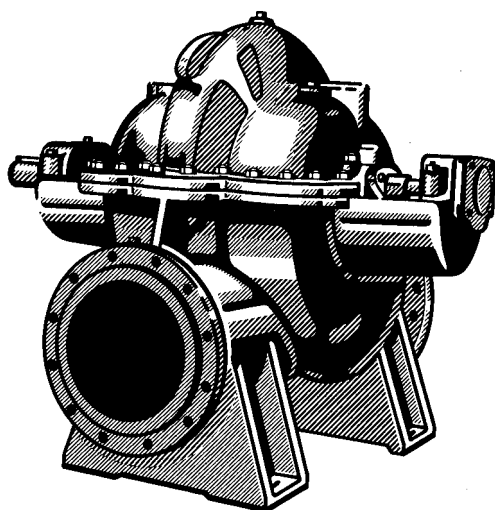


Axially split volute casing pumps



Applications

Waterworks, irrigation and drainage pumping stations, power stations, industrial water supply systems, fire fighting systems, marine applications as well as general applications in refineries.

Operating data

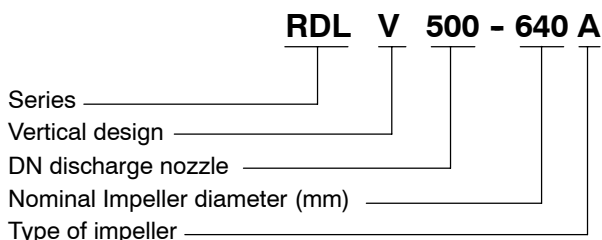
Pump sizes	DN 500	up to	1200	
Capacities	Q	up to	6000	l/s
Total head	H	up to	150	m
Operating pressure	p	up to	25	bar
Operating temperature	t			
horizontal design		up to	+105	°C
vertical design		up to	+80	°C

Design

Horizontal or vertical single stage axially split volute casing pump with double entry radial impeller. Design of the horizontal drive shaft stub optional at left hand or right hand side.

Flanges acc. to ISO, DIN, BS or ANSI

Designation



Bearings

RDL: Optional grease or oil lubricated anti-friction bearings which can be re-lubricated
 RDLV: upper bearing: Anti-friction bearing, grease lubricated
 lower bearing: Plain bearing, medium lubricated

Shaft seal

Stuffing box packing or mechanical seal

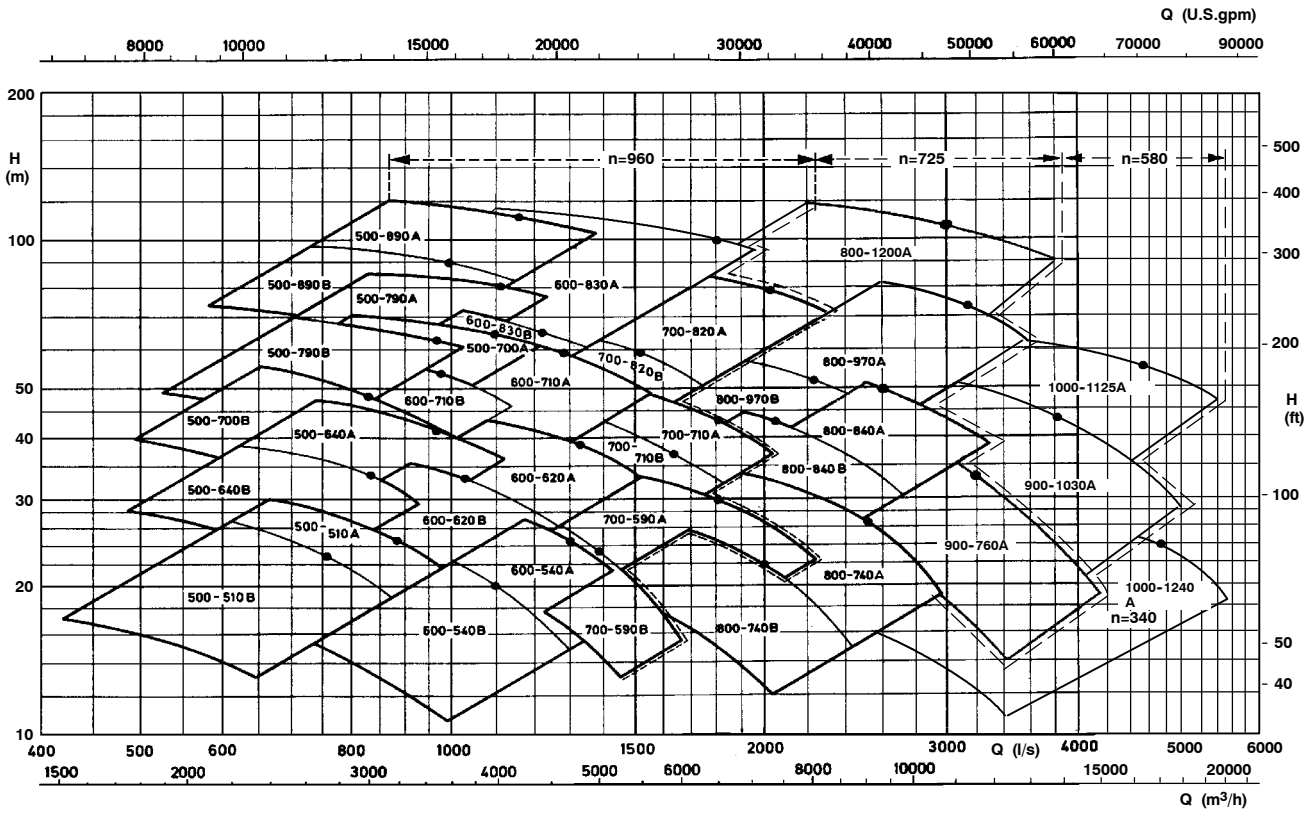
Program classification

Nominal diameters	Standard program	Supplementary program
DN 500 up to 800	X	
DN 900 up to 1200		X

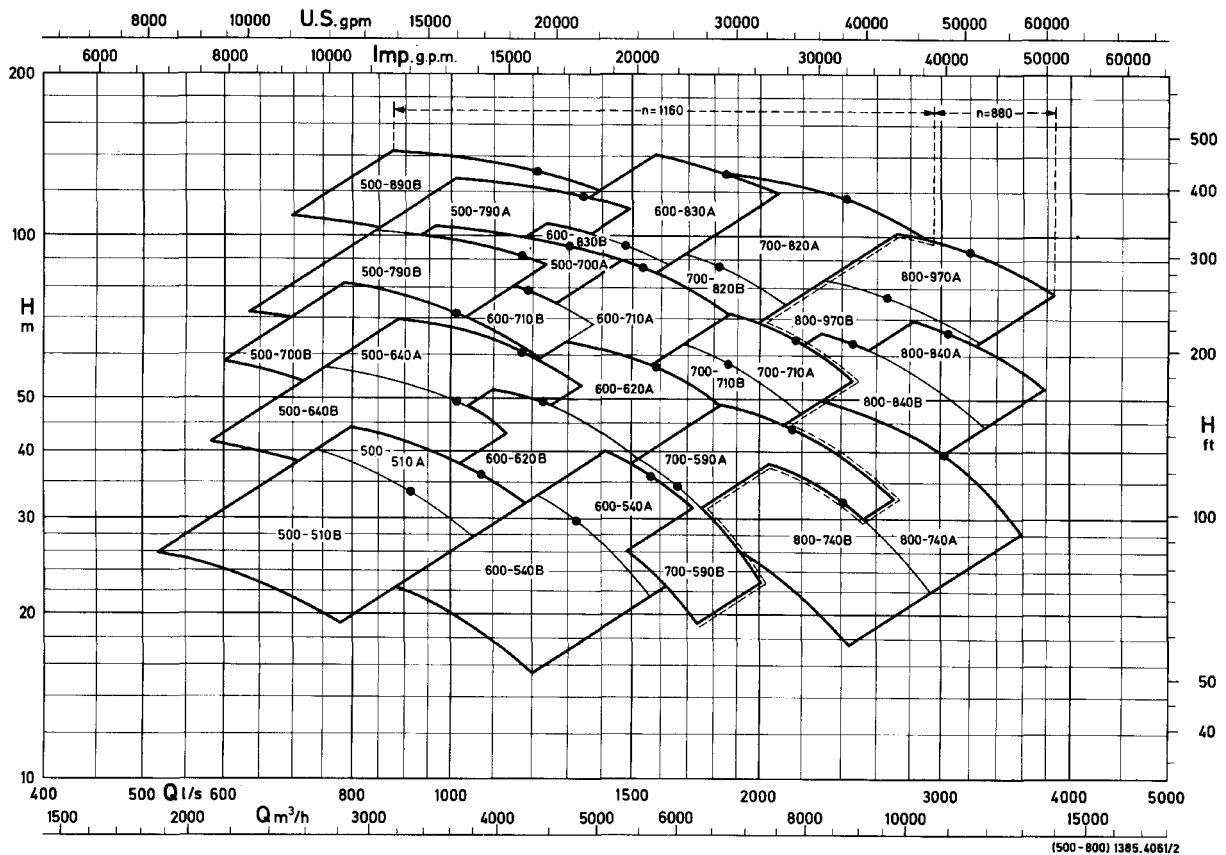
Materials

	ASTM	Similar to DIN
Volute casing	A48 class 35	GG-25
	A48 class 30	GG-20
	A536 class 604018	GGG-40
Shaft	SAE 1045	C45N
	AISI 420	1.4021
Impeller	584-90500	G-CuSn10
	A743 CA6NM	1.4313.95
	A743CF8M	1.4408
Shaft prot. sleeve	AISI 420	1.4021
Casing wear ring	B584-90500	G-CuSn10
	A743CA6NM	1.4313.95
Impeller wear ring	B584-90500	G-CuSn10
	A743CA6NM	1.4313.95

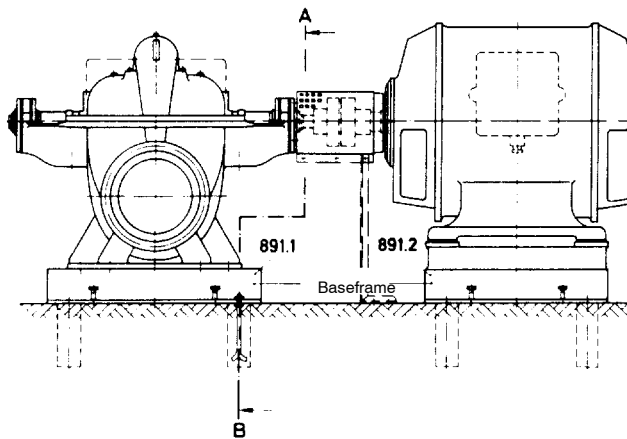
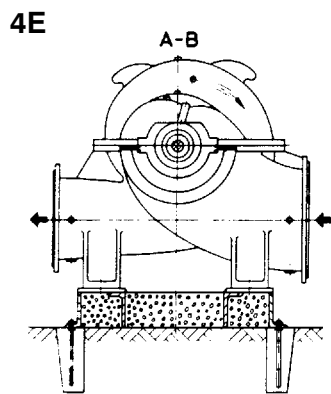
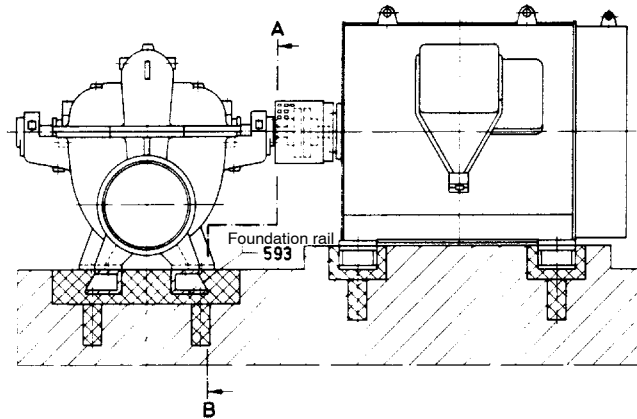
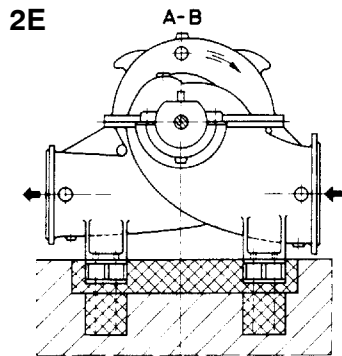
Selection charts 50 Hz



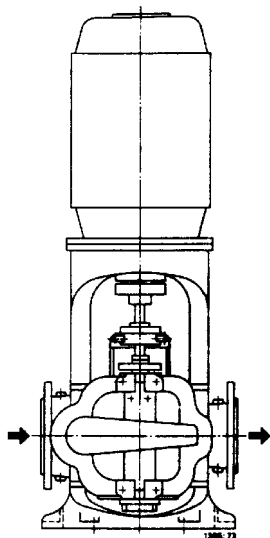
Selection charts 60 Hz



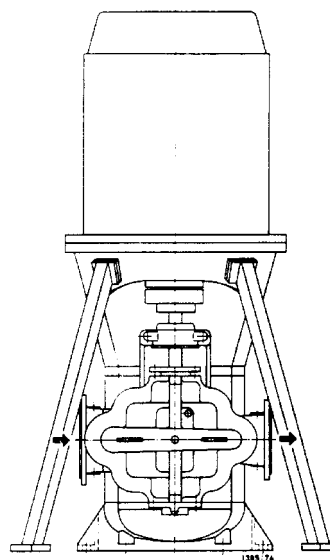
Types of installation RDL



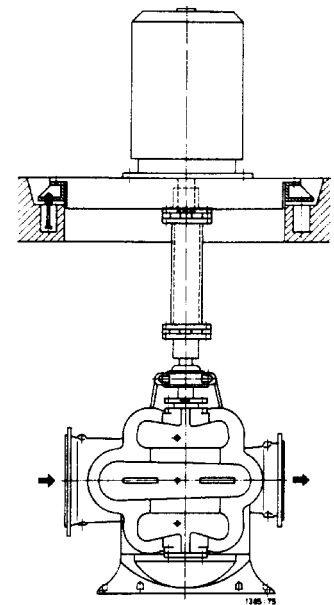
Types of installation RDLV



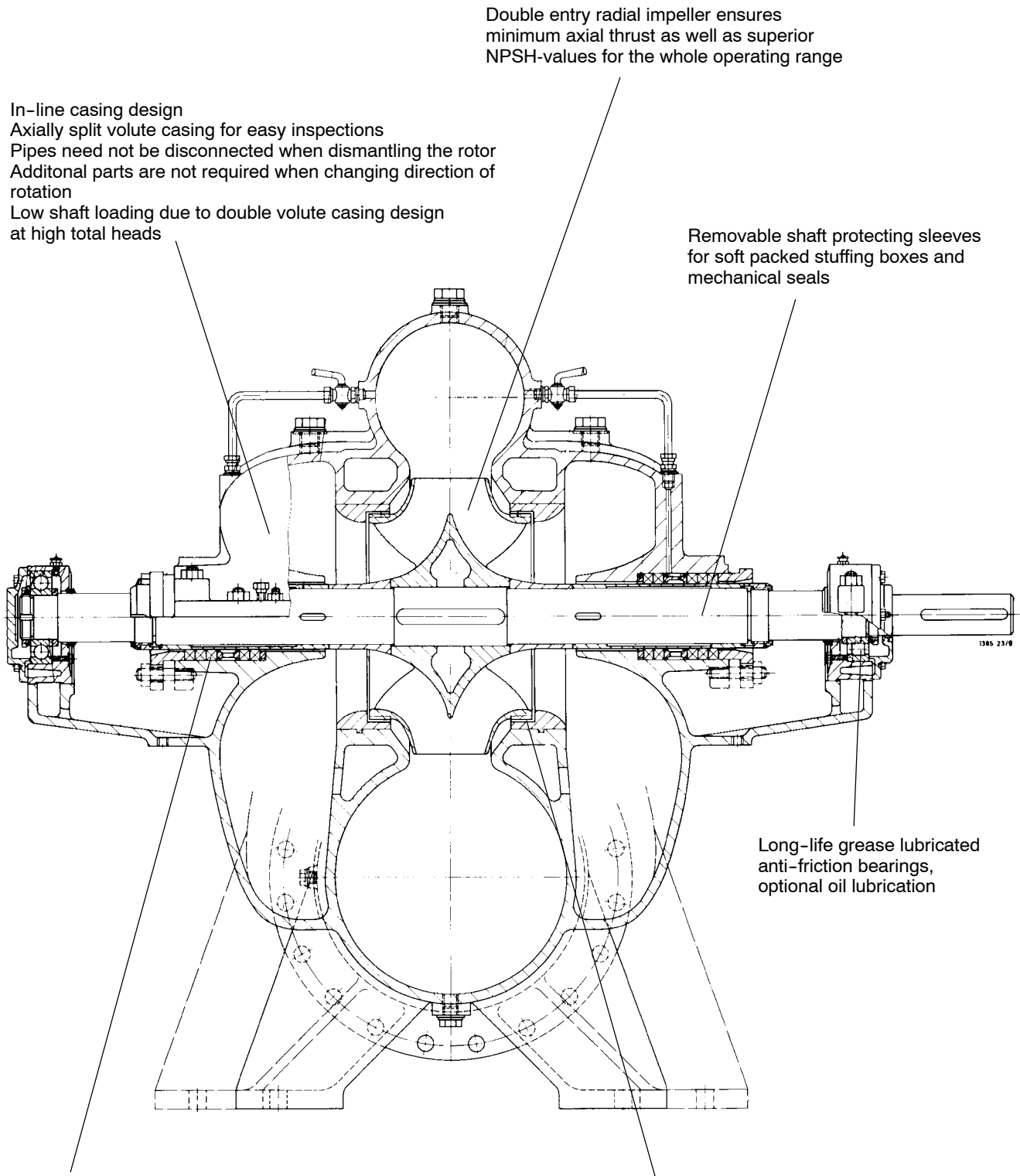
DB



DK



DJ



Double entry radial impeller ensures minimum axial thrust as well as superior NPSH-values for the whole operating range

In-line casing design
 Axially split volute casing for easy inspections
 Pipes need not be disconnected when dismantling the rotor
 Additional parts are not required when changing direction of rotation
 Low shaft loading due to double volute casing design at high total heads

Removable shaft protecting sleeves for soft packed stuffing boxes and mechanical seals

Long-life grease lubricated anti-friction bearings, optional oil lubrication

Application-oriented shaft seals
 - asbestos free, potable water-quality soft packed stuffing boxes
 - different types of mechanical seals

Constant high efficiencies due to removable casing wear rings and impeller wear rings

Subject to technical modifications.

XBS

21.07.04

1385.1/13-10



KSB Aktiengesellschaft

Johann-Klein-Str. 9 • 67227 Frankenthal • Germany

Phone: +49 6233 86-2656 • Fax: +49 6233 86-3412 • E-mail: info@ksb.com • www.ksb.com